

# KATO CES

## Zero Tail Swing Mini Excavator

# V Four HD60

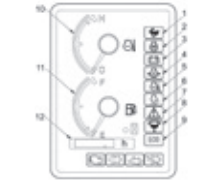


### Comfortable EVOLUTION

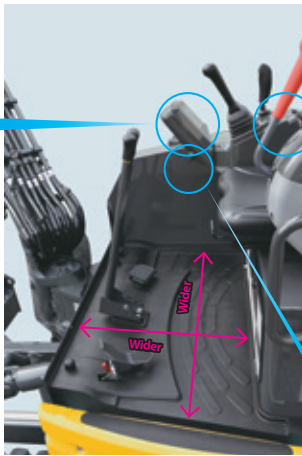
#### COMFORTABLE OPERATOR ROOM AND EASY MANIPULATION



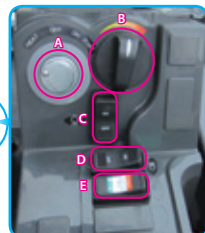
• Easily visible monitor



- 1 Travel speed indicator
- 2 Glow indicator
- 3 Battery charge warning indicator
- 4 Engine oil pressure warning indicator
- 5 Water temperature warning indicator
- 6 Auto idle indicator
- 7 Control lock warning indicator
- 8 Water-separator warning indicator
- 9 ECO mode indicator
- 10 Water temperature gauge
- 11 Fuel gauge
- 12 Hour meter



• Leg room enlarged by 20%  
 • Cabin room enlarged by 25%  
 \*In comparison with our former model



- Centralized switches (Right console box)
- A Engine starter switch
  - B Throttle dial
  - C Auto Idle selector switch
  - D Light switch
  - E Work mode selector switch



• Spare power port (12V 10A)

### Safety EVOLUTION

#### WORLD-STANDARD SAFETY

- ROPS/TOPS Compliance Operator Cab and Canopy
- ROPS/TOPS Canopy (std.)
- ROPS/ TOPS Cab (opt.)
- FOPS Cab (opt.)



ROPS/TOPS Cab (opt.)

#### ERROR-PREVENTION

- All-lever lock
- Neutral engine-start
- Auto-parking brake in swing & traction motors



All operations are blocked when the lever is raised.

### High Performance EVOLUTION

#### HIGH POWER DIGGING AND QUICK RESPONSE

- Digging force increased by 10%  
 \*In comparison with our former model
- Quickly responsive 4-pump system

#### EASY MAINTENANCE

- Large covers for easier access



• Right hand cover



• Engine room

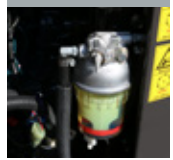
#### Hydraulic tank with air breather



#### Large fuel filter

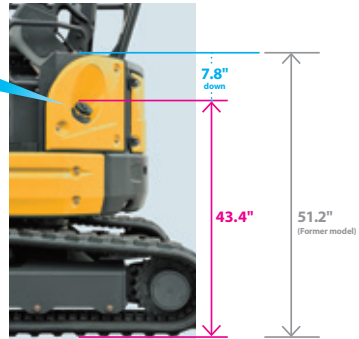


#### Water-separator



\* The warning indicator turns on if water is collected up to the specified level.

#### EASY FUEL REFILLING



#### LOW FUEL CONSUMPTION

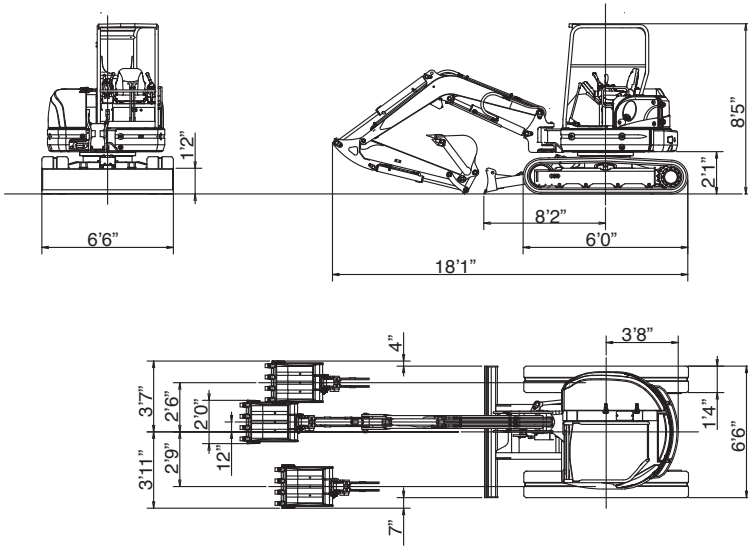
### 24% FUEL SAVINGS

From the New Auto Idle and Eco Mode Features.  
 \*In comparison with our former model

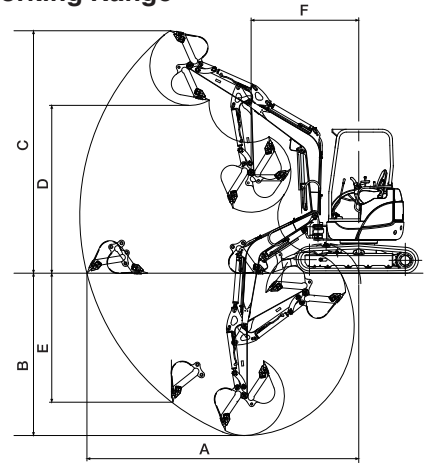
Refilling position (unit : inches)



■ Dimensions



■ Working Range

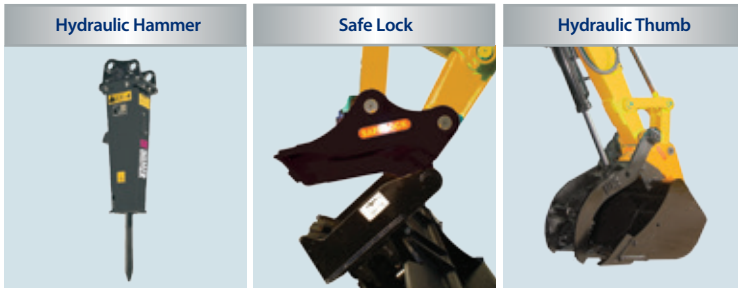


4-Post/Cabin	
A Max. digging radius	21'2"
B Max. digging depth	13'3"
C Max. digging height	19'0"
D Max. dumping height	13'9"
E Max. vertical digging depth	10'7"
F Min. front turning radius	8'1"
At right boom swing	7'0"

■ 60V4 Specifications

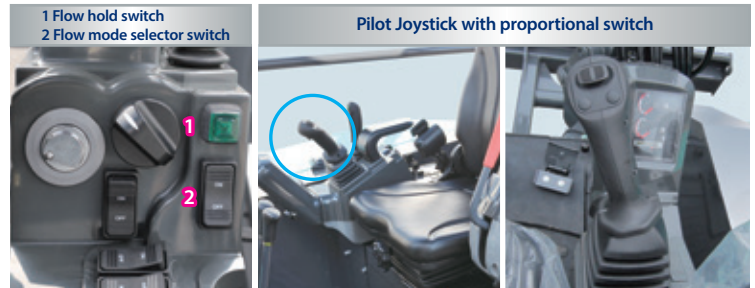
Performance		Boom swing system	
Bucket capacity	7.0 cu. ft.	Type	Boom offset with hydraulic cylinder
Bucket width	24"	Swing angle (L/R)	50°/80°
Operating weight: 4 Post (Cabin)	12,128 lbs. (12,595 lbs.)	Hydraulic system	
Transportation weight: 4 Post (Cabin)	11,795 lbs. (12,262 lbs.)	Pressure	3,554 psi
Swing speed	9.3 min <sup>-1</sup>	Type • Pump hydraulic flow	2 Piston/2 Gear • 15.9 gpm x 2 + 11.7 gpm
Travel speed (low/high)	1.8/2.8 mph	Dozer blade	
Gradeability	30°	Size	78"x15"
Ground pressure	4.5 psi	Lift above ground / Drop below ground	18"/17"
Max bucket digging force	12,100 lbs.	Max auxiliary flow	
Engine		1st line	15.8 gpm
Model	KUBOTA V2403-CR Tier 4 Final	2nd line (optional)	11.6 gpm
Rated output	44hp/2,400 rpm		
Fuel tank capacity	17.4 gallons		

Optional Attachments:



Photographs may differ in some cases from actual objects. Specifications are subject to change without notice due to technical improvements or modifications.

Features:



**COMPACT EXCAVATOR SALES, LLC**  
 400 Production Court • Elizabethtown, KY 42701  
 Phone: 800.583.1447 • Fax: 270.737.0419  
 WWW.KATOCES.COM